

State of Wyoming Corner Record

(in compliance with the CORNER PERPETUATION AND FILING ACT, Wyoming Statutes, 1997, Section 33-29-140, et. seq. and the Rules and Regulations of the Board of Registration for Professional Engineers and Professional Land Surveyors)

Reverse side of this form may be used if more space is needed.

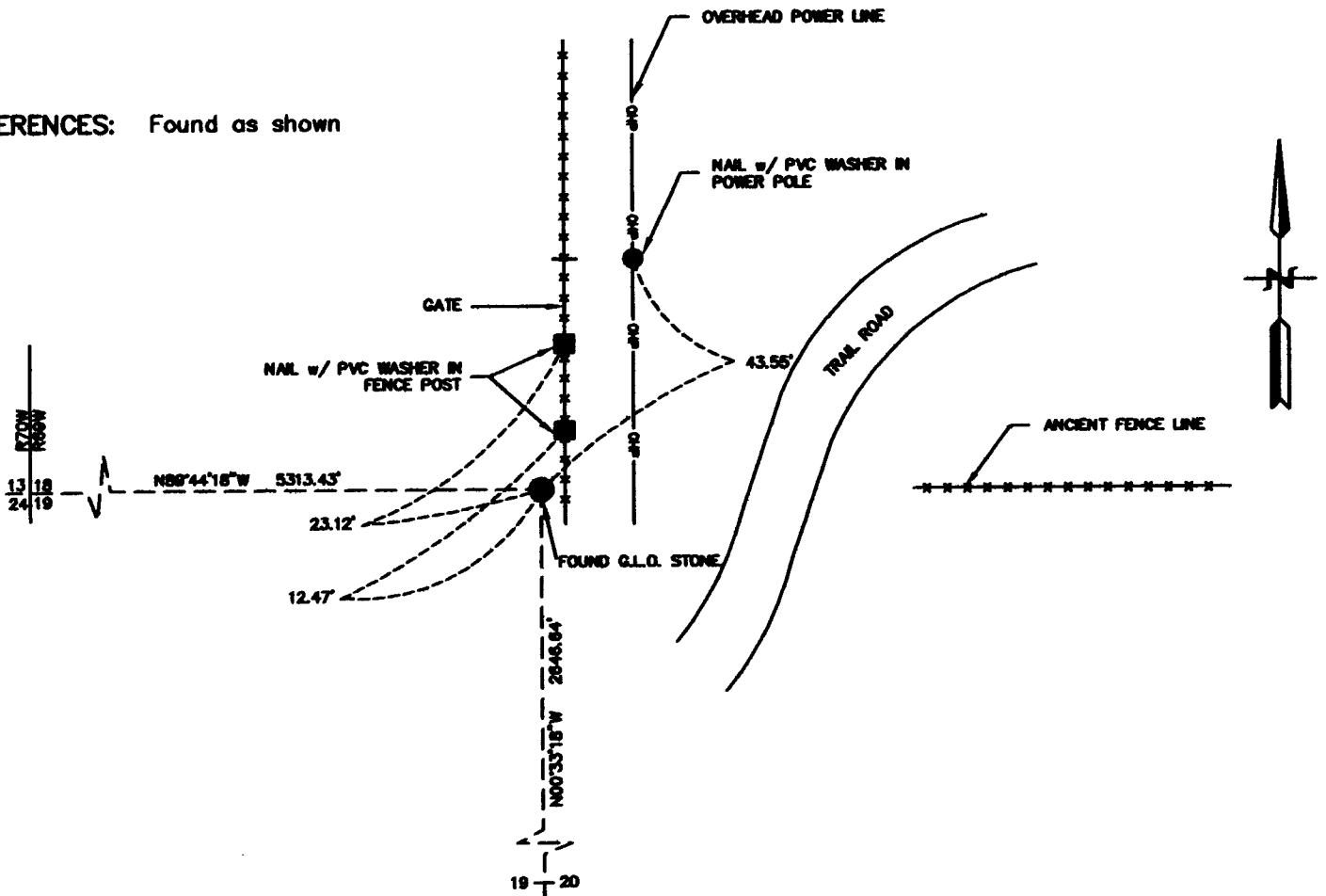
Record of original survey and citation of source of historical information (if corner is lost or obliterated). Description of corner monumentation evidence found and/or monument and accessories established to perpetuate the location of this corner. Sketch of relative location of monument, accessories, and reference points with course and distance to adjacent corner(s) (if determined in this survey). Method and rationale for reestablishment of lost or obliterated corner.

FOUND: Found original G.L.O. stone setting upright, some what deteriorated marks visible only on South side. Set stake & lathe and referenced as shown.

G.L.O. RECORD: Granite Stone 22" x 18" x 8"
Measured 15" x 6" x 11" (Above Ground)

SET: Nothing

REFERENCES: Found as shown



Date of Field Work: 12-03 Office Reference: 2-2389.03

Firm/Agency, Address

CROSS INDEX DIAGRAM

This corner record was prepared by me or under my direction and supervision.
SEAL & SIGNATURE

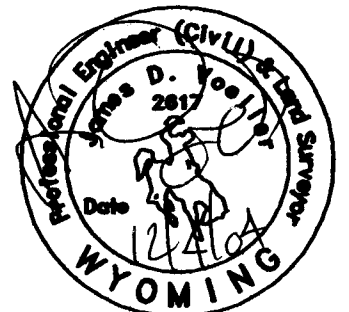
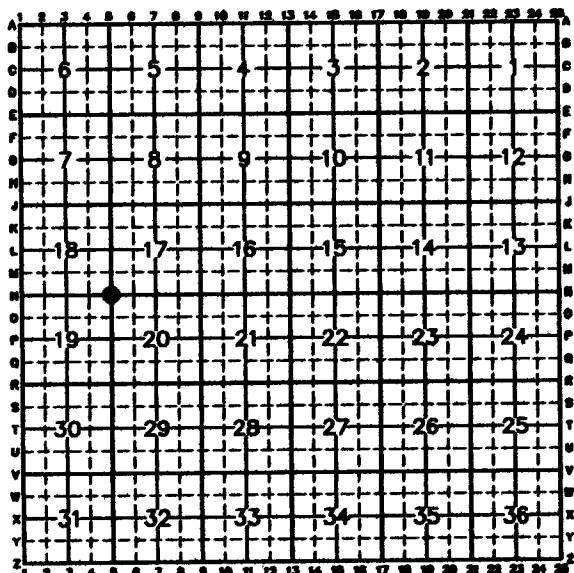
James D. Voeller

A.V.L., P.C.

2035 Westland Road

Cheyenne, WY 82001

Telephone Number: (307) 637-6017



Corner Name: SECTION CORNER Section: 18|17
19|20 T.14N R.69W; 6th P.M. Cross-Index No.: N-5
SRPEPLS/PLSW March 1994